

CLEARVISION®

### The Perfect Combination

Enjoy the benefits of the Preva DC intraoral x-ray and the ClearVision® sensor in one convenient system, the Preva Plus. Preva is preset to work optimally with ClearVision® and is specifically designed to make imaging easier and more efficient for your busy practice. A powered USB hub and all cabling are self contained and hidden inside the Preva Plus, helping to keep your operatory well-organized.



### Specifications\*

ClearVision® Digital Sensor systems include Progeny ClearVision® Sensor, Progeny® Imaging Software, USB drive, sample sheath pack, Rinn XCP-DS Fit sensor positioning guide and sensor holder.

Film Size Equivalent:	Size 1 Size 2
Active Area:	30mm x 20mm (Size 1) 36mm x 26mm (Size 2)
Number of Pixels:	1580 lines x 1050 pixels (Size 1) 1896 lines x 1368 pixels (Size 2)
Pixel Size:	19 µm x 19 µm
Theoretical Resolution:	26 lp/mm
Levels of Gray:	4096
Dynamic Range:	71 dB
Signal-to-Noise Ratio:	55 dB
Sensor Cable Length:	.9m or 3m
Connection Type:	USB 2.0, High Speed
Power Supply:	+5 V, per USB 2.0 specification
Level of Protection:	IP67 (sensor only, per IEC 60529)

*\*specifications subject to change without notice*

### Options

ClearVision® Laptop Suite	ClearVision® Digital Sensor System along with laptop pre-loaded with Progeny® Imaging software, Progeny® Device Suite including TWAIN client, and paired ClearVision® sensor calibration files
Sensor Safe Extended Care Plan	Comprehensive coverage for five years due to failure or malfunction due to normal use or accidental damage

### Progeny Imaging Software System Requirements

Please visit [progenydenal.com](http://progenydenal.com) or contact Progeny® Technical Support at 847-415-9800 for updated requirements

### Integrated Imaging Management Systems

Dexis®, XLDent™, CliniView™, OneView, MiPACS®  
Please visit [progenydenal.com](http://progenydenal.com) or contact Progeny® Technical Support at 847-415-9800 for updates

*For additional information, contact Progeny Technical Support at 847-415-9800*

Midmark Corporation  
675 Heathrow Drive Lincolnshire, IL 60069  
847-415-9800 Toll-free 888-924-3800

All Rights Reserved Printed in the USA  
ML-00098, Rev. C  
007-0887-00 Rev. B1 (7/13)

Progeny® products are proudly designs and manufacturers in the USA.



## DIGITAL SENSOR SYSTEM

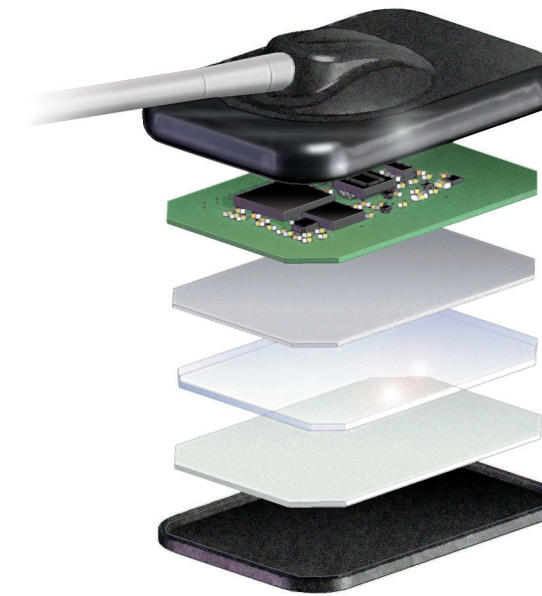
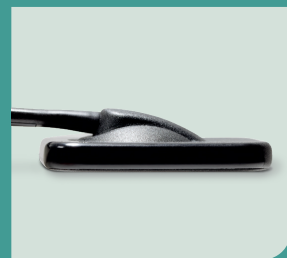
ClearVision® is the new digital sensor system from Progeny®. With a direct USB 2.0 connection, ClearVision® simplifies practice integration and delivers high quality images in a durable, patient-friendly design.



### Premium Comfort for Your Patients

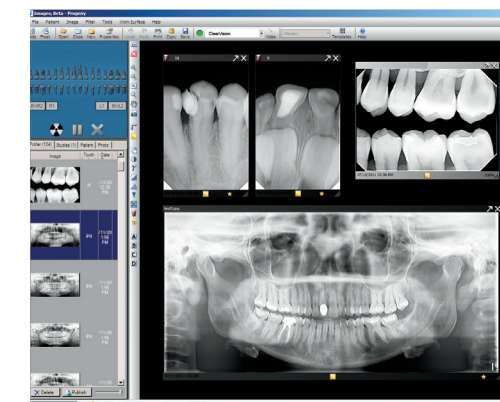
Give your patients a more positive experience. ClearVision® has a thin profile with rounded corners and contoured surfaces, minimizing patient discomfort commonly experienced with square or clipped edge sensors.

Because we know one size does not fit all, ClearVision® sensors are available in two sizes to best accommodate patient needs and examination requirements. To enhance positioning, the ClearVision® sensor cable is thin and flexible.



### Ideal Combination of Imaging Elements

A fiber optic faceplate enhances sharpness and image quality. The patented cut corner CMOS design maximizes the image area while providing increased patient comfort. And, the electronics have been optimized for low power USB draw, (less than 100mA) making the ClearVision sensor ideal for use with power limited laptops. All are enclosed within the hermetically sealed sensor housing.



### Imaging Software Comes Standard

Progeny® Imaging is an easy to learn and easy to use software that speeds image acquisition, diagnosis and image handling. Magnification, contrast or density adjustment, measurement assistance and annotations are just a few of the powerful tools provided. Images can be exported, emailed or printed for insurers, your patients or referrals. ClearVision® Sensors are integrated into many image management systems.



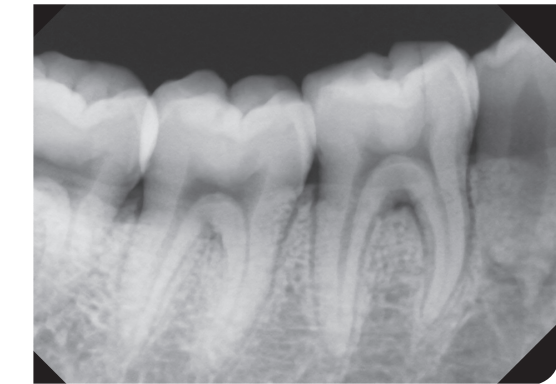
### Advanced Imaging Made Easy

Advanced CMOS technology optimizes resolution while reducing noise, producing sharp, detailed images for immediate review and diagnosis. Images appear onscreen within seconds and can be magnified or enhanced without compromising the visibility of important diagnostic details. ClearVision® digital sensors are compatible with leading practice management systems.



### Durable Quality You Can Depend On

Designed to stand the test of time, the sensor housing and cable provide a highly reliable, water tight connection, allowing for repeated immersion in disinfectants, improving asepsis. Kevlar® strands reinforce the cabling to deliver a thin, flexible cable that is very durable, while internal strain relief ensures the integrity of the cable attachment to the sensor casing. But, if a cable is damaged, it can be easily replaced. In addition, the Sensor Safe Extended Care Plan extends your sensor warranty and provides accidental damage replacement. Ask your Progeny sales representative for details.



### Clarity Image

**Progeny Clarity™ Enhanced Imaging Filter**  
Progeny Clarity™ Filter Set brings improved visualization for more accurate diagnosis. Clarity employs Multi-Frequency Processing and, works by collecting all image information, then separating each component of the visual spectrum. The components are processed separately, while unwanted diversions are minimized before reassembling the diagnostic image.



### Clarity Plus Image

**The Progeny Clarity™ Filter Set** offers the practitioner two treatment options

**Clarity** reduces the amount of unwanted distractions such as ghosting, often found in overlapping bony tissue, while demonstrating a wide range of grey shading.

**Clarity Plus** brings enhanced precision to patient anatomy by highly defining edges thereby improving the recognition of slight differences in tissue density.

The Clarity Enhanced Imaging Filter Set is included with Progeny® Imaging and is a compliment to other common image management programs.